



**I-10  
BALDWIN COUNTY  
CORE #20  
WBOL  
M.P. 44.0  
14.5"  
CRACK DEPTH 2.0"**





**I-10  
BALDWIN COUNTY  
CORE #21  
WBOL  
M.P. 43.8  
10.5"  
CRACK DEPTH 2.0"**





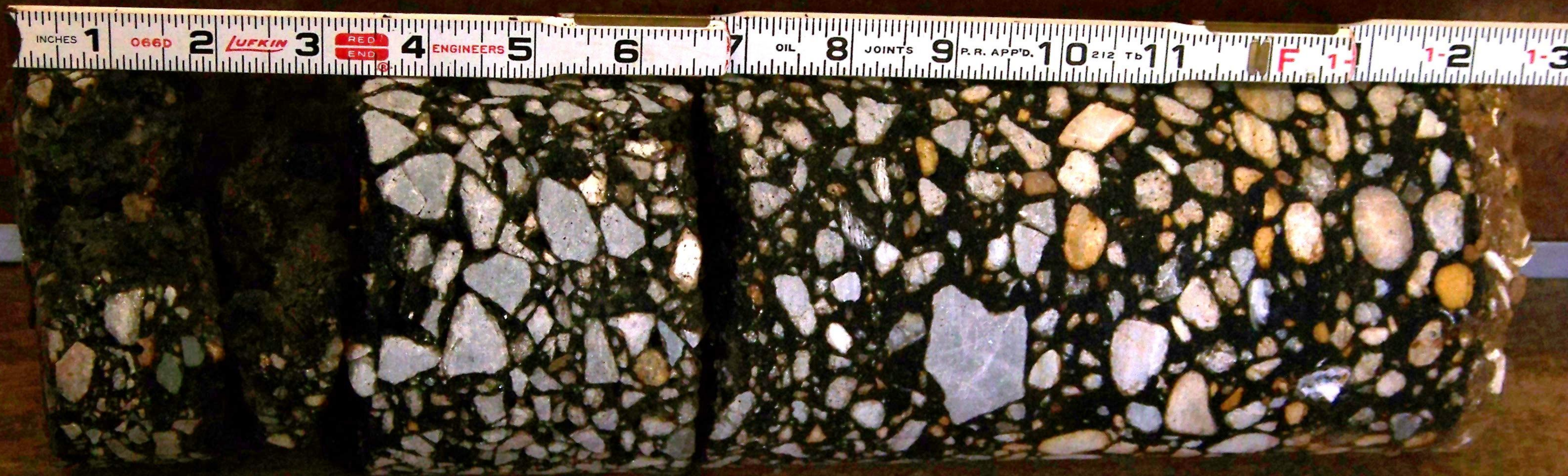
I-10  
BALDWIN COUNTY  
CORE #22  
WBOL  
M.P. 43.2  
13.75"





I-10  
BALDWIN COUNTY  
CORE #23  
WBOL  
M.P. 42.8  
13.0"  
CRACK DEPTH 3.0"





I-10  
BALDWIN COUNTY  
CORE #24  
WBOL  
M.P. 42.0  
13.25"  
CRACK DEPTH 2.0"





**I-10  
BALDWIN COUNTY  
CORE #25  
WBOL  
M.P. 41.6  
13.0"**





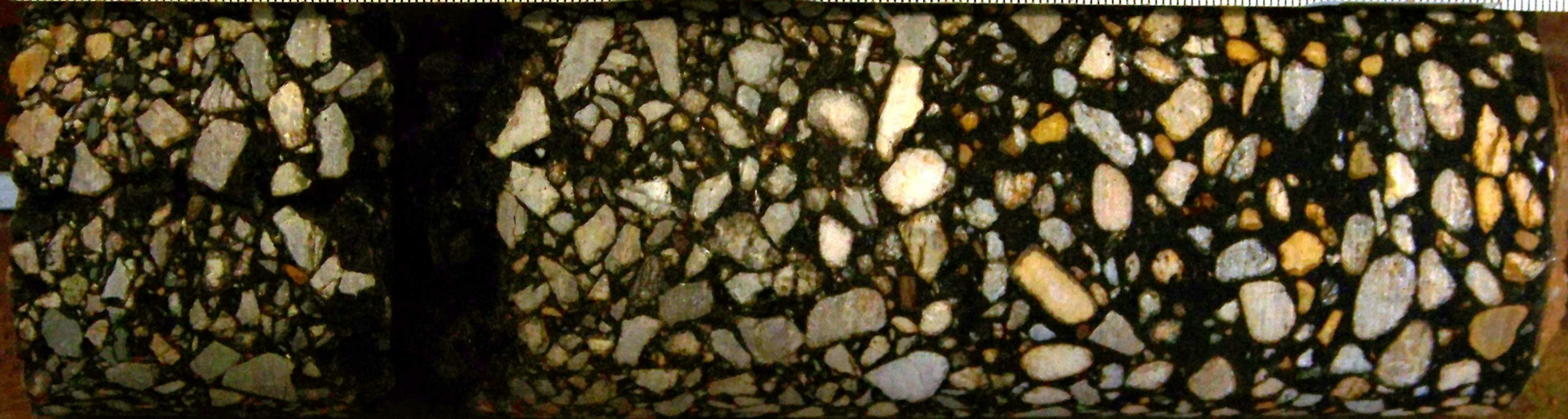
I-10  
BALDWIN COUNTY  
CORE #26  
WBOL  
M.P. 41.2  
12.5"





I-10  
BALDWIN COUNTY  
CORE #27  
WBOL  
M.P. 40.4  
13.0"





I-10  
BALDWIN COUNTY  
CORE #28  
WBOL  
M.P. 40.0  
13.0"  
CRACK DEPTH 3.0"





I-10  
BALDWIN COUNTY  
CORE #29  
WBOL  
M.P. 39.4  
12.5"  
CRACK DEPTH 2.0"





**I-10  
BALDWIN COUNTY  
CORE #30  
WBOL  
M.P. 39.2  
14.0"**





I-10  
BALDWIN COUNTY  
CORE #31  
WBOL  
M.P. 38.6  
14.0"





**I-10  
BALDWIN COUNTY  
CORE #32  
WBOL  
M.P. 38.2  
13.0"**





**I-10  
BALDWIN COUNTY  
CORE #33  
WBOL  
M.P. 37.8  
13.0"  
CRACK DEPTH 2.75"**





**I-10  
BALDWIN COUNTY  
CORE #34  
WBOL  
M.P. 37.4  
13.5"  
CRACK DEPTH 2.75"**





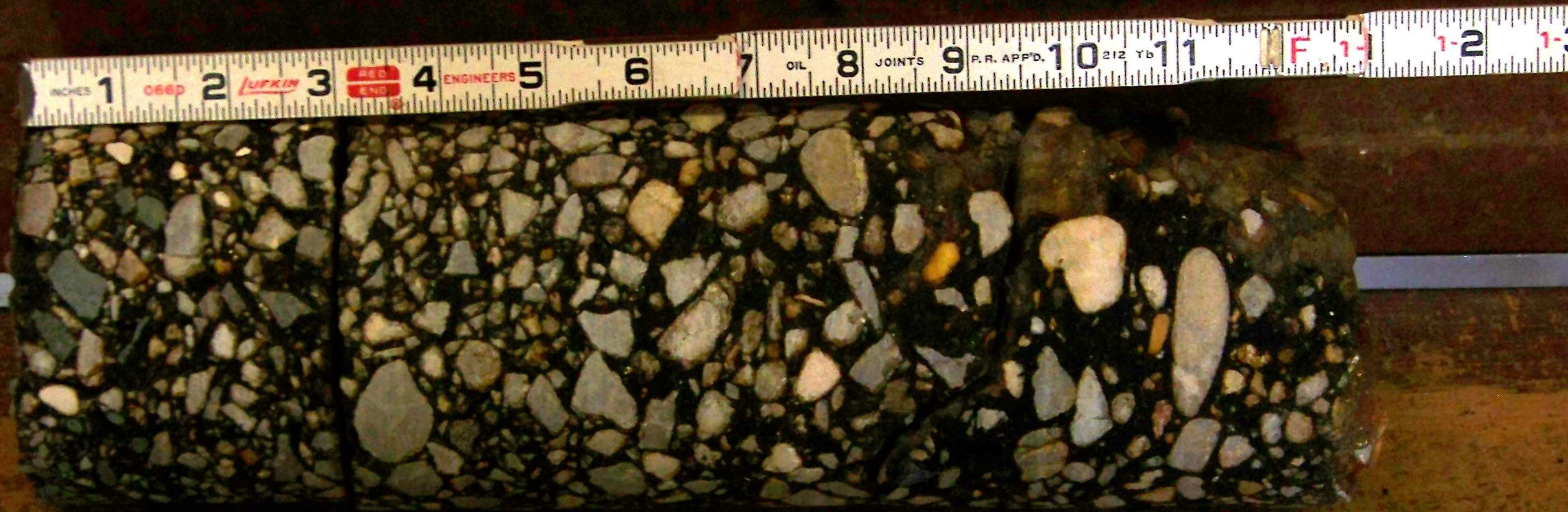
**I-10  
BALDWIN COUNTY  
CORE #35  
WBOL  
M.P. 36.8  
14.0"**





**I-10  
BALDWIN COUNTY  
CORE #36  
WBOL  
M.P. 36.2  
11.5"  
CRACK DEPTH 1.5"**





**I-10  
BALDWIN COUNTY  
CORE #37  
WBOL  
M.P. 35.8  
12.5"  
CRACK DEPTH 1.0"**





I-10  
BALDWIN COUNTY  
CORE #38  
WBOL  
M.P. 35.4  
13.5"