



Disadvantaged Business Enterprise Forum

July 11, 2018

DISCLAIMER: This presentation is intended to provide an unofficial overview of the project status and studies performed by the project team as of the presentation date. All data and schedules shown in the presentation are preliminary and subject to change. The National Environmental Policy Act (NEPA) review of the preferred project and project alternatives is ongoing and subject to final review and approval by the Federal Highway Administration.



Presentation Overview

- Project Scope
- DBE Opportunities
- Procurement and Schedule
- Proposing Teams



Project Scope

Purpose and Need

1. Increase capacity of I-10 to meet existing and predicted future traffic volumes
2. Provide a more direct route for vehicles transporting hazardous materials
3. Minimize impacts to Mobile's maritime industry



MOBILE RIVER
BRIDGE & BAYWAY

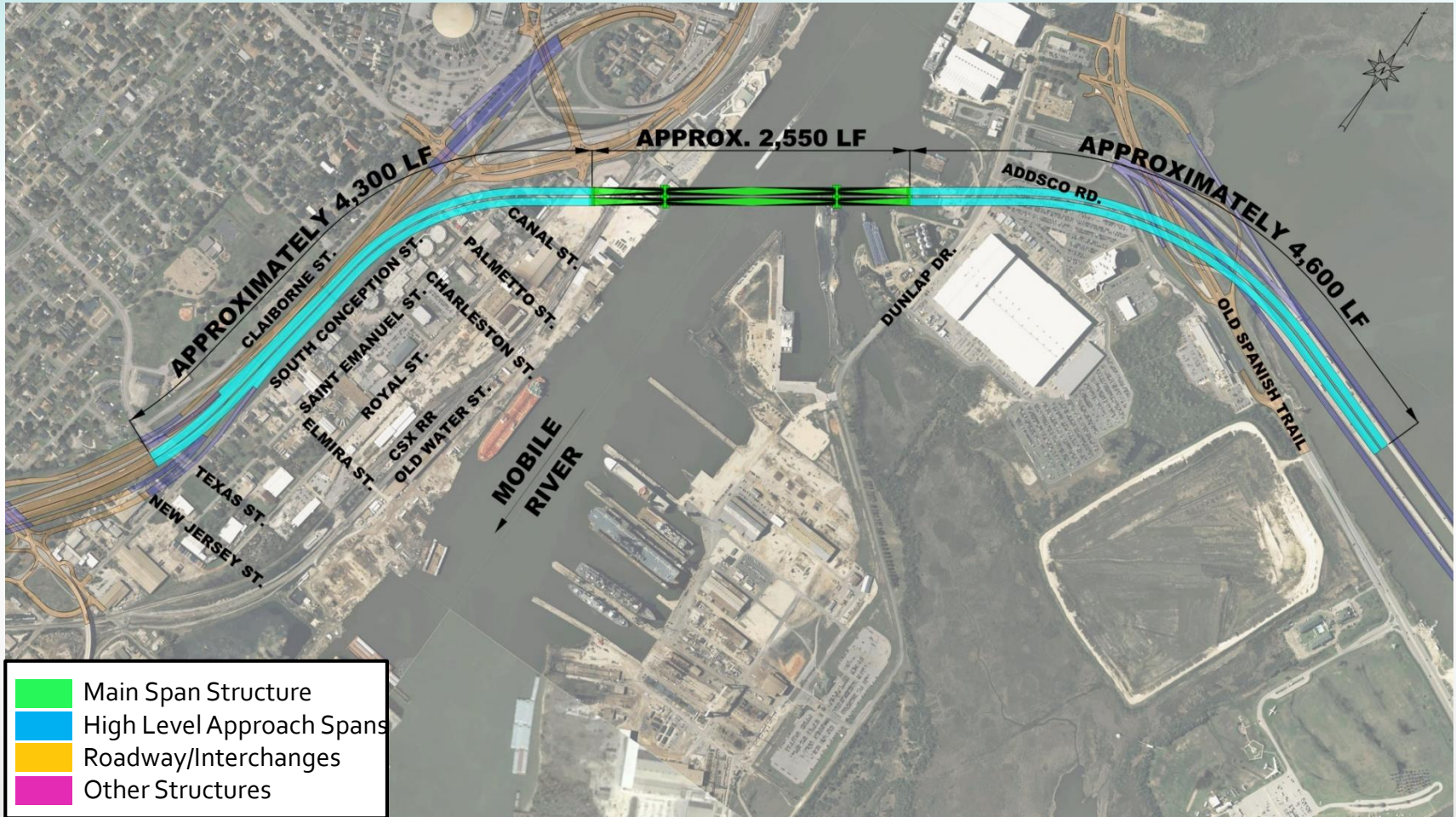


Project Area Overview

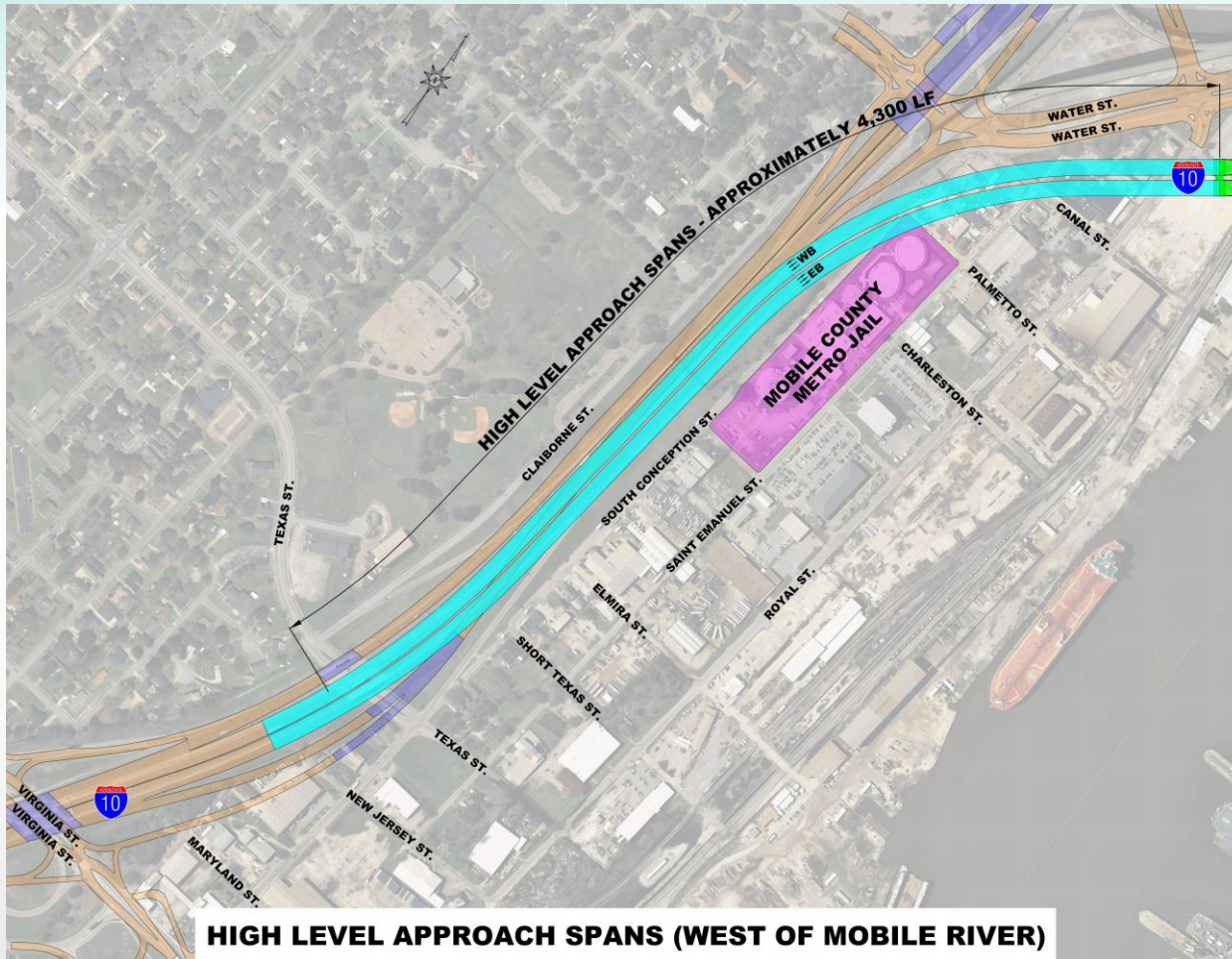
- Signature bridge
- Bayway replacement
- 7 interchange modifications



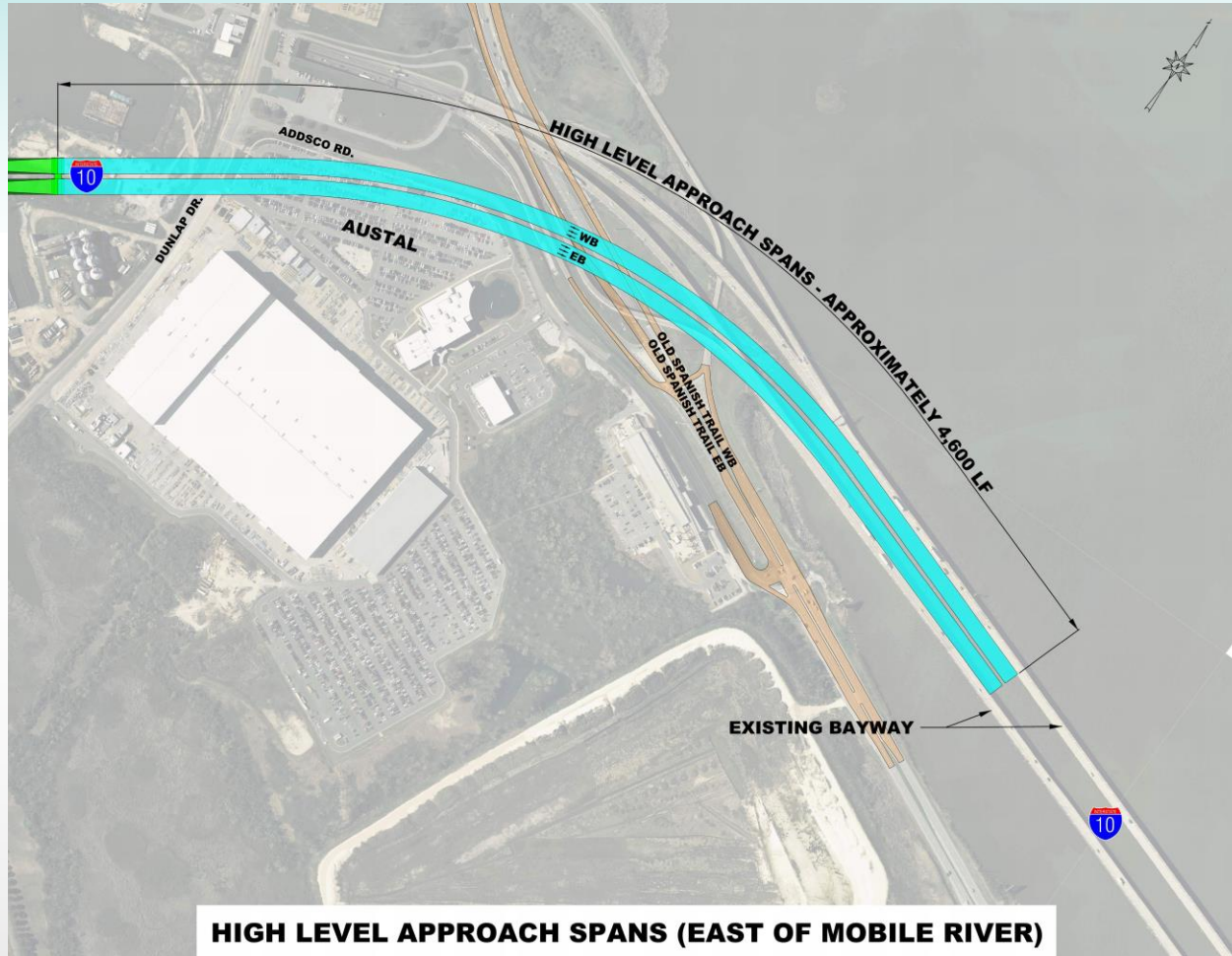
High Level Approaches and Main Span Unit



West High Level Approach



East High Level Approach



Main Span Bridge

- Cable-stayed bridge
- Six lane
- Observation deck
- 215' Clearance



Bayway

-
- Replace existing 4 lane structures with 8 lanes
 - New structures built above 100 year storm surge impacts
 - Approximately 7.5 miles long



Interchanges

- 7 interchanges
 - Broad Street
 - Virginia Street
 - Texas Street
 - Canal/Water Street
 - US-90/98 at East Tunnel
 - US-90/98 at Midbay
 - US-90/98 at Daphne



DBE Opportunities



Opportunities

- Design
- Survey
- Public Outreach
- Structure Demolition



Opportunities

- Geotechnical
- Utility Relocation
- Environmental Mitigation



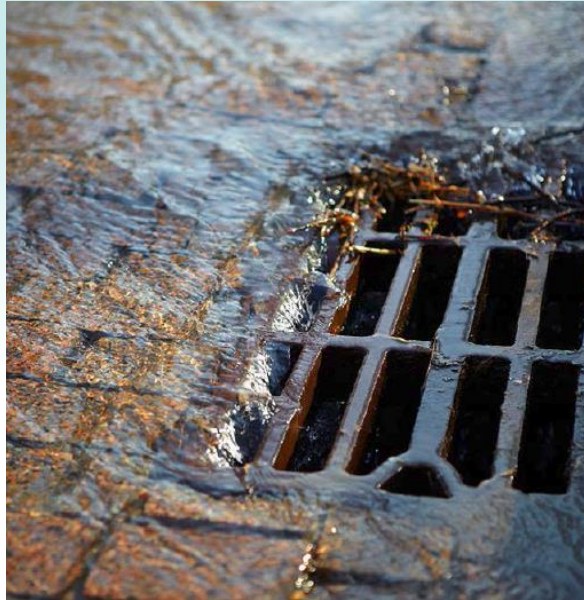
Opportunities

- Bridge
 - Demolition
 - Cable-stay
 - Bayway and overpasses
 - High-level approaches
- Retaining walls



Opportunities

- Roadway
 - Hauling
 - Drainage
 - Paving
 - Curb and gutter
 - Erosion control
 - Stormwater
 - Striping and marking
 - Lighting
 - Signing
 - Landscaping



Procurement and Project Schedule

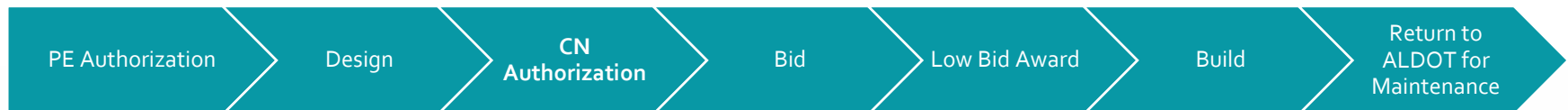
Alternative Delivery Method

“A Public Private Partnership (P3) describes a **contractual arrangement** between a Department (**public authority**) and a Developer (**private entity**) or connection with the design, build, financing, operations and maintenance (DBFOM) of an asset that will be used by or is otherwise a valuable project.”

- Concession period: 55 years = 5 years construction + 50 years maintenance and operation

Alternative Delivery Method

Normal Process: Design, Bid, Build



MRB Process: Design, Build, Finance, Operate & Maintain



Project Schedule

- Present-early 2019
 - Industry Review and RFP
- Mid 2019
 - Project award
- Early 2020-2025
 - Construction
- 2025-2075
 - Maintenance and operations period

Proposing Teams



I-10 MOBILITY PARTNERS

Equity Members:



(Spain)



(France)

Lead Engineering:

PARSONS

ferrovial
agroman

Lead Contractor:

PARSONS

Lead O&M:





Equity Members:



Lead Engineering:



CREATING BRIDGES AS ART

Lead Contractor:



Lead O&M:





EQUITY MEMBERS



LEAD CONTRACTOR FIRM



LEAD CONTRACTOR DEDICATED SUBCONTRACTORS



ENGINEERING FIRMS



Track Our Progress




www.mobileriverbridge.com



- VISION
 - PROJECT
 - OPPORTUNITIES
 - NEWS & MEDIA
- Contact 

MOBILE RIVER BRIDGE
AND BAYWAY
BUILDING OUR CONNECTION

Get updates

- 
- 
- 
- 